



# GDVS Series Sterile Air Filter Housings

## Product Introduction

GDVS series sterile air filter housing is a single cartridge housing which can accommodate Filtrafine SSD-Steam/Sterile series filter cartridge. It is equipped with sanitary TC connections and is made of Ra 32 electropolished surface 316L stainless steel.

GDVS series sterile air filter housing is in-line high efficiency filters used to remove contaminate particles from steam systems in the pharmaceutical, biotechnology, food and beverage industries. GDVS is designed to ensuring high flow rates at low differential pressures. The tri-clamp / hex-bolt closure design provides absolute sealing and easy installation.

## Materials of Construction

Head : 316L stainless steel  
Shell : 316L stainless steel  
Gasket : Silicone ( EPDM, Viton are available upon request)



Manufactured from materials which are listed for food contact applications in Title 21 of the U.S. Code of Federal Regulations.



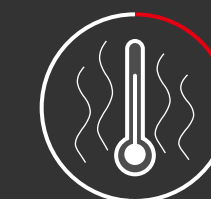
CE Certificated.



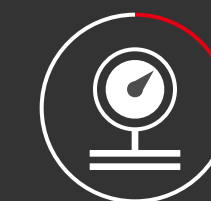
Manufactured under a certificated ISO9001 and ISO14001 quality system.



316L Stainless Steel Material.



Maximum temperature 232°C (450°F).  
Only for xGDVS-304/316L-xxxx-HB-xFA.



Maximum Operating Pressure 16bar (232 psi).  
Only for xGDVS-304/316L-xxxx-CB-xTC.



### Capacity Correction Factors for Gas Applications<sup>1</sup>

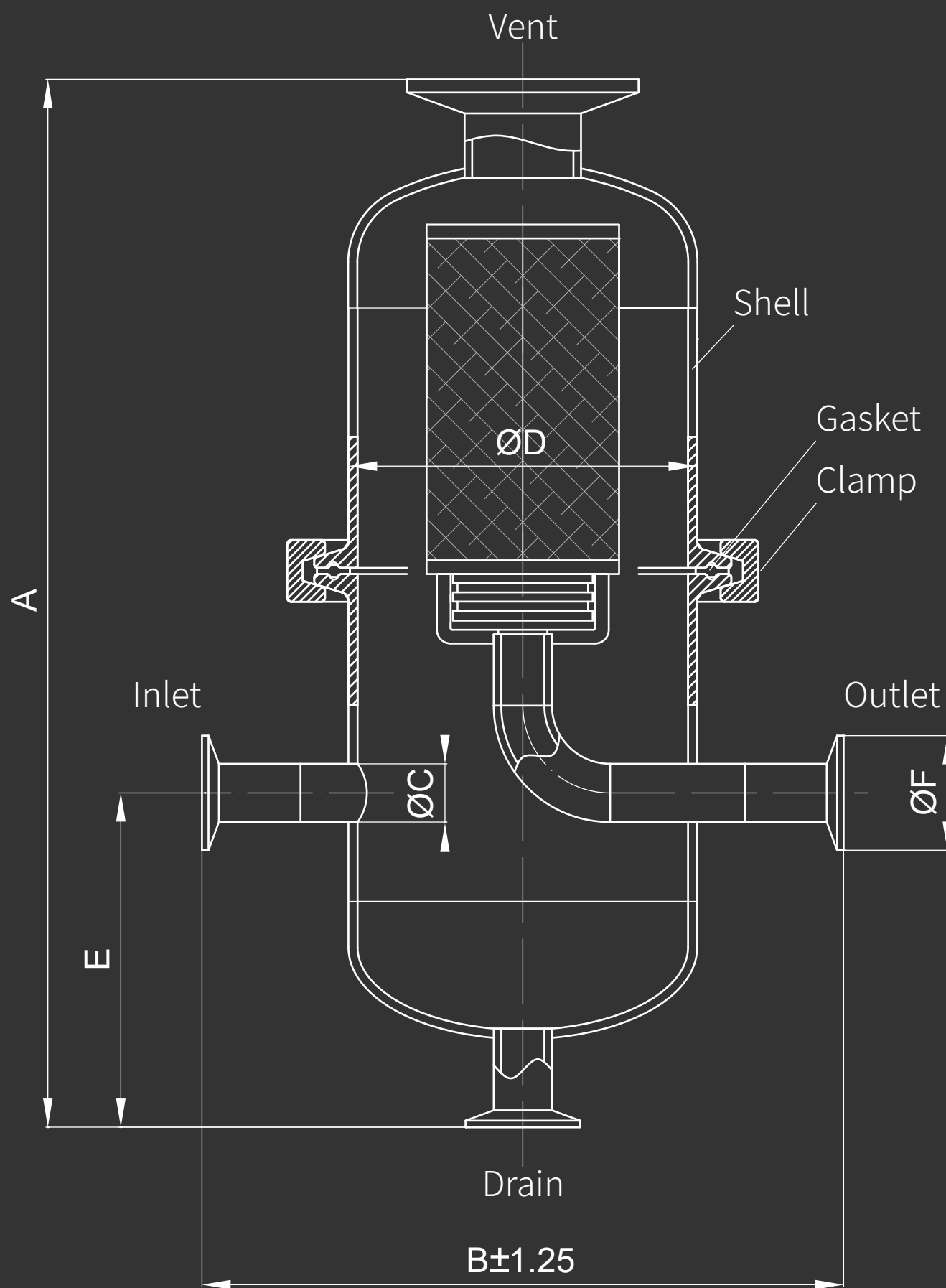
Operating Pressure (psig)	15	30	45	60	75	90	100	115	130	150	160	175	190	200	220	230
Correction Factor	0.25	0.36	0.52	0.60	0.75	0.90	1.00	1.10	1.20	1.40	1.50	1.60	1.75	1.90	2.00	2.10

### Capacity Correction Factors for Steam Applications<sup>1</sup>

Operating Pressure (psig)	15	30	50	82	115	125	150	175
Saturated Steam Temperature (°F)	250	281	297	324	347	353	366	377
Correction Factor	0.46	0.77	1.0	1.5	2.0	2.15	2.53	2.92

- 1 Published capacity based on 100 psig inlet pressure for compressed gas and 50 psig for steam. To determine capacity at other operating pressures, multiply published value by correction factor. Capacities are general recommendations and may vary based on element selections, operating conditions, and allowable pressure losses.
- 2 GDVS series are designed for elements with UF push-in end.
- 3 Price includes housing only. Gas/steam element price must be added.
- 4 Denotes distributor discount level which applies to list price.

# 1GDVS-316L-xxxx-CB-xTC

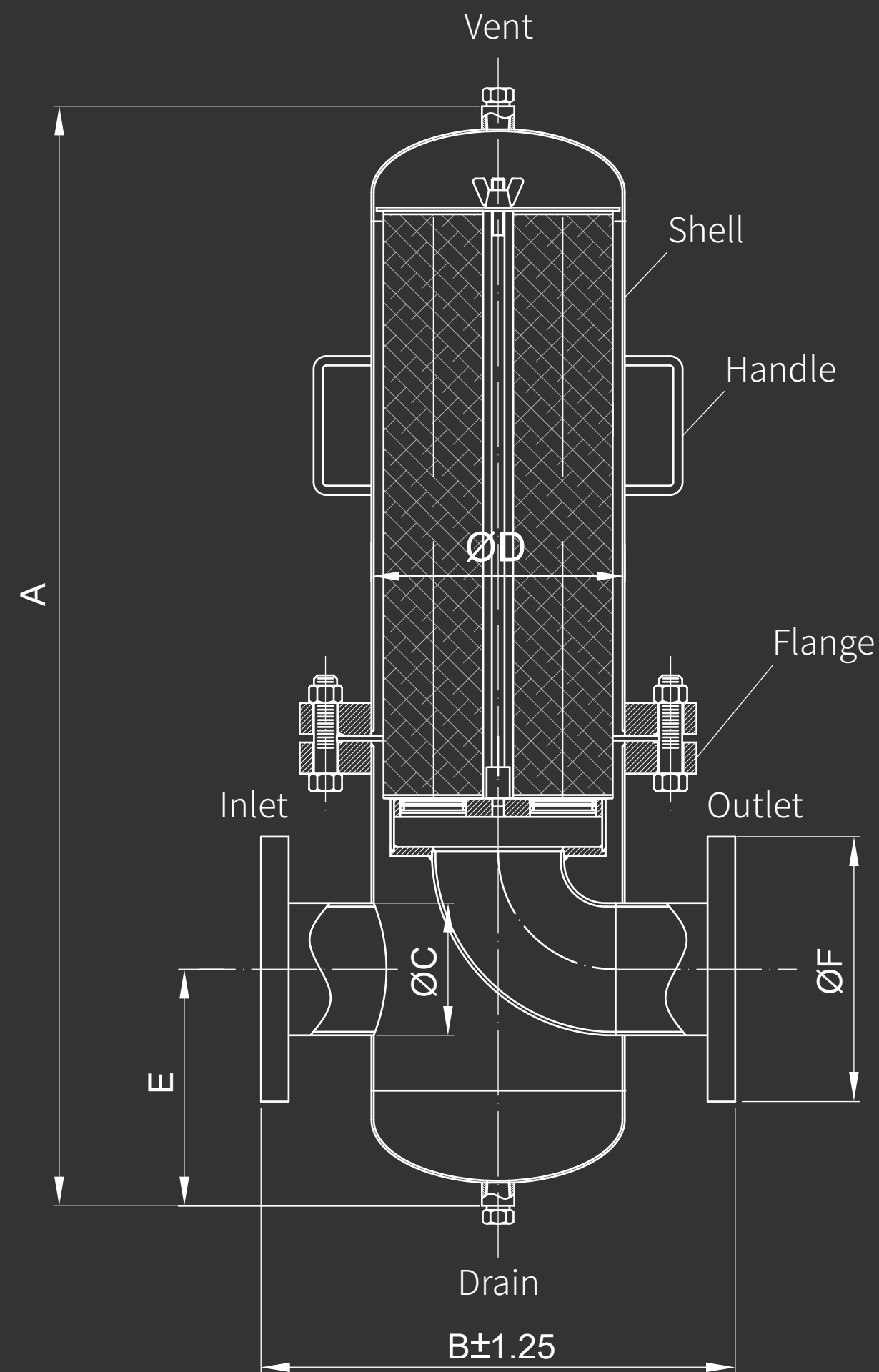


## Ordering Information

1	GDVS-	316L-	10	30-	CB-	2	TC
Cartridge Quantity	Product Name	Material of Construction	Cartridge Length	Cartridge Outside Diameter	Lock In Method	Inlet / Outlet Connection Size	Inlet / Outlet Connection Type
1	GDVS	316L=316LSS	03=3", 05=5", 10=10", 20=20", 30=30"	10=1.65", 20=2.05", 30=3.39"	CB=Clamp	0.5", 1", 2", 2.5", 3"	TC=Sanitary Connection

Model	inch(mm)						Cartridge Length	Cartridge Outside Diameter	Inlet / Outlet Connection Size	Drain Connection Size	Vent Connection Size	Design Pressure and Temperature	Gas Capacity (scfm)	Steam Capacity (lbs/hr)
	A	B	C	D	E	F								
0310-CB-0.5TC	8.98" (228)	5.5" (140)	0.5" (12.7)	3" (76.2)	2.87" (73)	1" (25)	3"	1.65"	0.5"	0.5"	1"	232 psig @ 392°F	36	100
0520-CB-0.5TC	11.06" (281)	5.5" (140)	0.5" (12.7)	3" (76.2)	2.87" (73)	1" (25)	5"	2.05"	0.5"	0.5"	1"	232 psig @ 392°F	108	160
0530-CB-1TC	12.44" (316)	6.69" (170)	1" (25.4)	4" (101.6)	3.25" (83)	2" (50.5)	5"	3.39"	1"	0.5"	1"	232 psig @ 392°F	216	400
1030-CB-2TC	18.75" (476)	7.5" (190)	1.88" (48.3)	4" (101.6)	4.06" (103)	2.5" (64)	10"	3.39"	2"	0.5"	1"	232 psig @ 392°F	432	800
2030-CB-2.5TC	29.01" (737)	7.87" (200)	2.5" (63.5)	4" (101.6)	4.25" (108)	3.06" (77.5)	20"	3.39"	2.5"	0.5"	1"	232 psig @ 392°F	864	1800
3030-CB-3TC	39.8" (1011)	7.87" (200)	3" (76.2)	4" (101.6)	4.43" (113)	3.58" (91)	30"	3.39"	3"	0.5"	1"	232 psig @ 392°F	1296	2500

xGDVS-304/316L-xxxx-HB-xFA



Ordering Information

3	GDVS-	316L-	20	30-	HB-	4	FA
Cartridge Quantity	Product Name	Material of Construction	Cartridge Length	Cartridge Outside Diameter	Lock In Method	Inlet / Outlet Connection Size	Inlet / Outlet Connection Type
3, 4, 6, 8, 10	GDVS	304=304SS 316L=316LSS	20=20", 30=30"	30=3.39"	HB=Hex-Bolt	4", 6", 8"	FA=ANSI Flange

inch(mm)

Model	A	B	C	D	E	F	Cartridge Length	Cartridge Outside Diameter	Inlet / Outlet Connection Size	Drain Connection Size	Vent Connection Size	Design Pressure and Temperature	Gas Capacity (scfm)	Steam Capacity (lbs/hr)
3GDVS-2030-HB-4FA	37.4" (950)	16.14" (410)	4.5" (114.3)	8.62" (219)	8.66" (220)	9" (229)	20"	3.39"	4"	0.5"	0.5"	150 psig @ 450°F	2880	4500
3GDVS-3030-HB-4FA	47.44" (1205)	16.14" (410)	4.5" (114.3)	8.62" (219)	8.66" (220)	9" (229)	30"	3.39"	4"	0.5"	0.5"	150 psig @ 450°F	3840	5850
4GDVS-3030-HB-6FA	51.42" (1306)	18.9" (480)	6.63" (168.3)	10.71" (272)	9.76" (248)	11" (279)	30"	3.39"	6"	0.5"	0.5"	150 psig @ 450°F	4992	9200
6GDVS-3030-HB-6FA	51.97" (1320)	21.26" (540)	6.63" (168.3)	12.05" (306)	10.12" (257)	11" (279)	30"	3.39"	6"	0.5"	0.5"	150 psig @ 450°F	7680	12000
8GDVS-3030-HB-8FA	56.93" (1446)	25.98" (660)	8.62" (219)	15.98" (406)	12.09" (307)	13.5" (343)	30"	3.39"	8"	0.5"	0.5"	150 psig @ 450°F	9984	14900
10GDVS-3030-HB-8FA	56.93" (1446)	25.98" (660)	8.62" (219)	15.98" (406)	12.09" (307)	13.5" (343)	30"	3.39"	8"	0.5"	0.5"	150 psig @ 450°F	12672	17100